

UNIVERSITY MEDICAL

WrinkleMD®



Eye

Hyaluronic Acid Deep Infusion System



UNIVERSITY MEDICAL

WrinkleMD®

Thank you for purchasing the WrinkleMD Hyaluronic Acid Deep Infusion System. Finally, experience something you thought could never happen: radiant, smoother, younger-looking skin with a significant reduction in the appearance of crow's feet wrinkles.

Professional results at home.

Now you can deliver Hyaluronic Acid (HA) – the same primary ingredient found in the wrinkle fillers used by dermatologists – gently and safely at home. Advanced Micro-Pulse Ion Technology infuses a concentrated boost of medical-grade Hyaluronic Acid and peptides deep into skin.

HA is also found in our own bodies. It's abundant in young skin but decreases with age, most rapidly after 40. The WrinkleMD system infuses HA back into your skin, safely concentrating treatments where lines and wrinkles form.

Enjoy the power of radiant, youthful-looking skin.



Anti-Aging at a Deeper Level



SYSTEM INCLUDES:

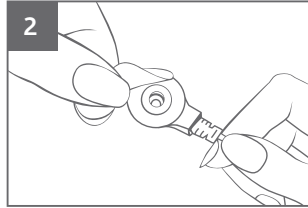
5 HA Infusion Eye Patch Sets · Activator Pod with Protective Pouch
Youth Serum HA™ 1 FL OZ (30 mL)

HOW TO USE

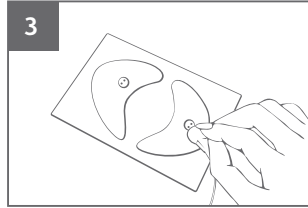
1 Cleanse Skin

IMPORTANT: For best results, apply patches after thoroughly cleansing and drying entire face. Any residue from makeup, moisturizers, or other skin products in the treatment area will reduce performance.

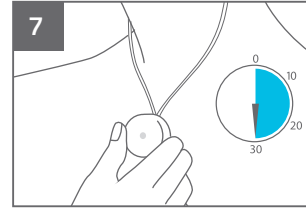
Recommended: [WrinkleMD Infusion Skin Prep](#), sold separately.



Peel off the small, round seal from one of the Activator Pod connector buds. Do not discard the seal; keep handy and reapply to either bud after treatment.



Open a treatment pouch. Remove the eye patch set (keep them on the liner) and place on a firm, flat surface. Snap the Activator Pod connector buds onto each patch.



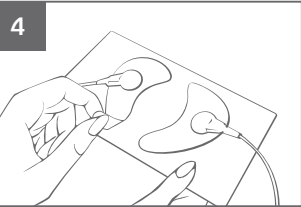
After 30 minutes, the light will flash rapidly for a few seconds and turn off, indicating treatment is complete.

8 Remove Patches

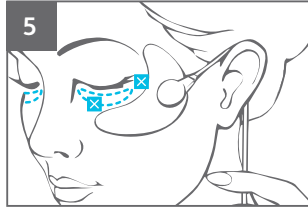
Be gentle! Patches are sticky. Remove them slowly to avoid excessive pulling on your skin. Hold skin taut. Lift from the side closest to the nose and gently peel off toward the side of the face.

9 After Treatment

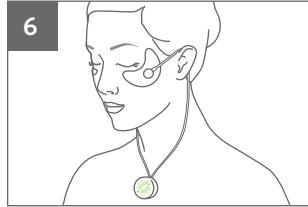
Unsnap and discard patches. Replace the protective seal saved from Step 2 onto either one of the Activator Pod buds. (Note: Only one seal is included and needed.) Keep the Activator Pod protected in its pouch for future treatments.



Peel off one patch from liner and press gently onto skin, then peel off the second patch from the liner and apply. Use a mirror to help position and be sure all edges adhere to the skin.



IMPORTANT: Do not cover the lower eyelids or place patches closer than a pinky-fingertip away from the corner of the eye. These areas are very delicate and should not be treated with patches.



Tuck the cords behind your ears. Treatment starts when the patches make contact with your skin. The Activator Pod light will turn green and blink slowly throughout the 30 minute treatment.

10 Extend and Enhance Your Results

Immediately follow treatment with [Youth Serum HA™](#). Gently massage serum into treatment area. Continue to apply daily in the AM and PM on clean, dry skin. May be worn under makeup or moisturizer.

Recommended: Apply to face and neck, massaging into expression lines and forehead creases, at the corners of eyes and around the mouth.



Precautions: The WrinkleMD® Hyaluronic Acid Deep Infusion System should be used only as directed. Check with your physician before using if you are pregnant, have a pacemaker or similar device, are epileptic, wear metal braces on your teeth, or have a metal implant. Do not use over an area with broken capillaries or over an inflamed or open wound.

A Boost for Your Beauty Regimen...

FIRST WEEK: Quick-start your results with two patch treatments for the first week. Allow two to four days between patches.

Keep Your Youthful-Looking Skin...

FOLLOWING WEEKS: Maintain your results with patch treatments once a week, together with Youth Serum HA daily, AM and PM.

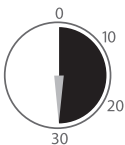
WrinkleMD® Activator Pod

INDICATOR LIGHTS

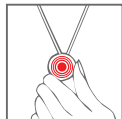


Start and Completion of Treatment

- Once the patches adhere to skin, a green light will turn on for a few seconds and treatment will begin.
- The green light will blink slowly throughout treatment.



- After 30 minutes, the green light flashes rapidly for a few seconds and turns off, indicating treatment is complete.
- The Activator Pod will turn off until next treatment.



Interruption During Treatment

- If at any time during the treatment the Activator Pod buds are detached, a red light will appear and flash rapidly for five minutes.
- You will have five minutes to reconnect the buds in order to complete the 30-minute treatment.
- If the buds are disconnected for longer than five minutes, the Activator Pod will reset for the next 30-minute treatment.

Need Assistance with Your Activator Pod?

Contact our Customer Service team at **1.855.299.8800** and we'll be happy to help.

IMPORTANT: Do not open the Activator Pod.

The battery cannot be replaced. The pod contains no reusable products. Do not recharge, puncture, modify, dispose in fire or trash incinerator, or heat above 212 °F (100 °C). Do not submerge in water.

Warranty

The Activator Pod has a two year warranty. For more information visit WrinkleMD.com

WARNING: Keep the Activator Pod and patches out of reach of children. Do not disassemble the Activator Pod. The 3v battery contains Perchlorate. Do not put battery in mouth. Ingestion may cause choking or serious harm within two hours. If swallowed, contact physician or local poison control center immediately.

Frequently Asked Questions

Will I feel the WrinkleMD® Eye System working?

Yes. You may feel a slight tingle that moves from one patch to the other.

How quickly should I expect to see results?

Many women experience a significant reduction in the appearance of wrinkles with just one 30-minute treatment. In clinical studies, wrinkles were significantly reduced in just two weeks. As with all skin treatments, individual results vary.

Can I use the WrinkleMD Eye System if I have sensitive skin?

In clinical studies, women with sensitive skin experienced no irritation. If any slight redness occurs after use, it should fade within half an hour.

What if the patches do not stick properly?

It's very important to make sure the skin around your eyes is completely clean and dry before applying each patch treatment.

Can I apply more than one set of patches on the same day?

No. Do not apply patch treatments more than once every three days. Use only as directed.

Can I reuse the patches?

No. Patches are only for single use and should be properly disposed of after initial use.

Can I apply other products on the patches?

No. The ingredients are already infused into each patch. Never apply any other products to patches.

Since the WrinkleMD Eye System is hands-free, can I do other activities during each treatment?

You're free to either work or unwind while treating your skin, but we recommend that facial muscles remain in a comfortable, relaxed state for best results. Avoid activities that may cause you to sweat during treatments. Keep the Activator Pod cords out of the way by tucking them behind your ears.

What if the Activator Pod cords are too snug at the neck?

If needed, slide down the small connector on the cords and gently separate until the cords feel comfortable.

Is it important to save and reapply the protective seal on an Activator Pod bud?

Yes. This keeps the Activator Pod from turning on while stored. If you lose the seal, make sure the metal parts of the buds are not touching while stored.

Can I replace the Activator Pod battery?

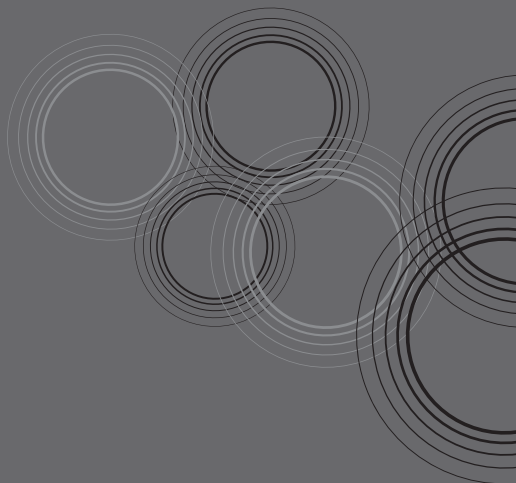
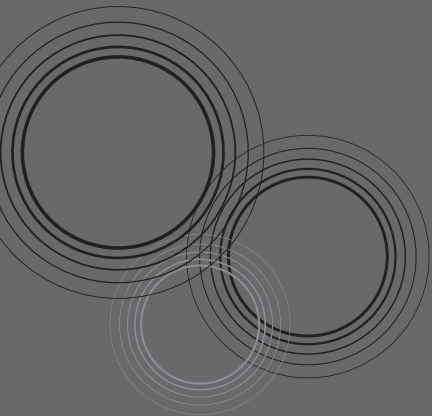
No. The Activator Pod should not be opened.

Where can I purchase more patches?

Refills are available at the retailer where you purchased your WrinkleMD Eye System and at WrinkleMD.com. You can also order by phone at 1.855.299.8800.

Is there a warranty?

Yes, the Activator Pod has a two year warranty. For more information visit WrinkleMD.com



wrinklemd.com 1-855-299-8800

Distributed by University Medical Pharmaceuticals Corp.
Irvine, CA 92618 ©2013 Worldwide Patents Pending