

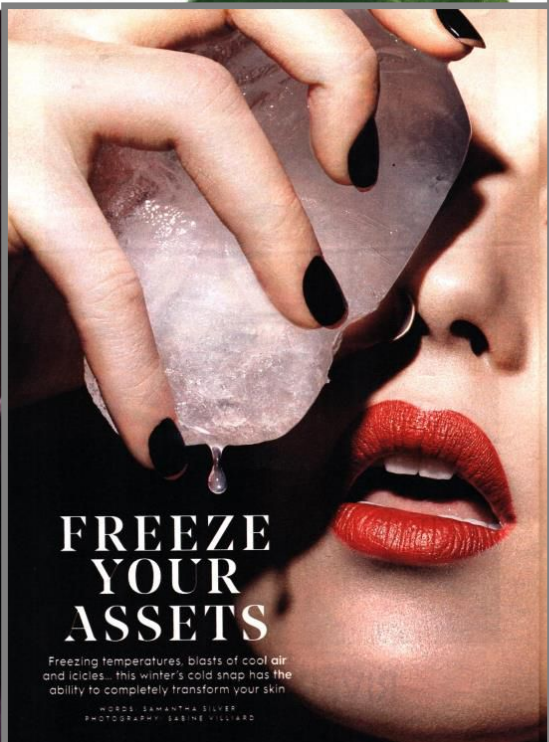
**Stylist**

2<sup>nd</sup> November 2016

Circulation: 404,408

**IF YOU'VE BEEN LEFT WITH A BLOTCHY COMPLEXION POST-WORKOUT. THIS CHILLING MASK RESETS THE SKIN'S THERMOSTAT COOLING IT RIGHT DOWN. IT'S A CONCENTRATION OF GREEN BOTANICALS AND A UNIQUE CALMING DIPEPTIDE CLINICALLY PROVEN TO DROP SKIN'S TEMPERATURE BY 2.8 DEGREES**

FREE FASHION TRAVEL PEOPLE AS BEAUTY  
**STYLIST**



**FREEZE YOUR ASSETS**

Freezing temperatures, blasts of cool air and icicles... this winter's cold snap has the ability to completely transform your skin

WORDS: SAMANTHA SILVER  
PHOTOGRAPHY: FABRINE VILVARD

**BEAUTY**

**CRYO ENERGISING FACE SERUM, £149, 111 SKIN**  
For those who don't live in the capital, 111 Skin has bottled the effects of their ice chamber. The serum, while not cold on application, speeds up the skin's energy force similar to freezing conditions for higher levels of skin repair and that all-important radiant glow.

**PHYTO CORRECTIVE MASQUE, £55, SKINCEUTICALS**  
If you've been left with a blotchy complexion post-workout, this chilling mask resets the skin's thermostat cooling it right down. It's a concentration of green botanicals and a unique calming dipeptide clinically proven to drop skin's temperature by 2.8 degrees.

**CELLULAR SWISS ICE CRYSTAL TRANSFORMING CREAM (SPF30), £134, LA-PRAIRIE**  
Pricy but for good reason, this is your skincare, for sunscreen in one. In a rich complex of plants (that thrive in conditions) it gets the colder it gets the better.

**RE-NUTRIV ULTIMATE LIFT REGENERATING CREAM GELÉE, £215, ESTÉE LAUDER**  
Himalayan gentian flowers survive extreme conditions by increasing their regeneration the colder it gets. Estée Lauder has introduced them into its protective day cream. It feels like applying a strawberry blancmange to your face but melts to form a protective winter skin shield.

**EYE EXPRESS RADIANCE ICE CUBES, £43 FOR A PACK OF SIX, ANNE SEMONIN**  
For the morning after a late night, swipe one of these mineral-rich ice cubes under the eyes to brighten and de-puff before applying eye cream. Ginkgo helps to boost micro-circulation and improve the appearance of dark circles. Make space in your freezer for party season.

**EH-XT20 3-IN-1 MICRO FACIAL ENHANCER, £199, PANASONIC**  
Researchers at the Schrader Institute in Germany found that the temperature at which products are applied alters their efficacy. Run this cold titanium plate over your face after applying skincare to increase product penetration by 40%.

**PHYTO CORRECTIVE MASQUE, £55, SKINCEUTICALS**

If you've been left with a blotchy complexion post-workout, this chilling mask resets the skin's thermostat cooling it right down. It's a concentration of green botanicals and a unique calming dipeptide clinically proven to drop skin's temperature by 2.8 degrees.

2 NOVEMBER 2016  
STYLIST.CO.UK