

ATTENTION PHYSICIANS & PATIENTS

Pro-Sil™ is not available in most pharmacies. Patients may order from their physician or direct from Biodermis

PROSIL™
PROfessional therapy for scars

ANOTHER INNOVATION



Now available in two convenient sizes.

17g and 4.25g tube, shown actual size.

For more information or to place an order within the USA call

1-800-374-3376

www.biodermis.com

email: info@biodermis.com
(702) 260-4466

© 2010 NV Biomedical, Inc. (dba Biodermis™) All rights reserved.

from
BIODERMIS™

NEW PRODUCT

Biodermis is once again paving the way for the scar management industry by bringing you our latest innovation for managing hypertrophic and keloid scars. Our patent pending Pro-Sil™ provides the same industry leading scar management technology found in Xeragel™, in a convenient, easy to apply glide-on applicator.

- All the benefits of Xeragel™
- Even easier to apply
- Compact applicator
- New formula lasts longer
- Physician tested and approved

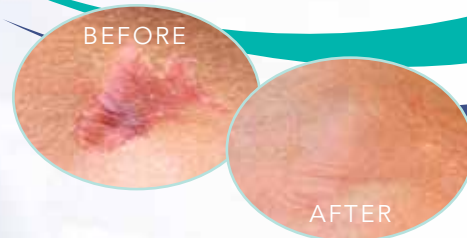
What are Keloid and Hypertrophic Scars?

Keloid and hypertrophic scars are usually thick, raised, unattractive scars. They are frequently associated with a variety of characteristics including hardened, rope-like protrusions, raised surfaces and excessive discoloration.

No product will ever completely eliminate a scar, however Biodermis™ products are clinically proven to be both safe and effective as a method to manage these unsightly scars and help them blend in with the surrounding healthy tissue.

Over twenty years ago, *Biodermis* was first to introduce a revolutionary technology that set the standard for scar management, and spawned the evolution of the silicone scar management industry as we know it today. We have been providing innovative solutions for scar management and post operative care products since that introduction.

How? By providing you with the very latest in innovative products for managing hypertrophic and keloid scars, while backing them up with unparalleled customer service.



PROSIL™
PROfessional therapy for scars