

carefix™

Creating functional comfort



Post-Surgical Bras

TYTEXGROUP
Making healthcare more human

Smooth and supportive fit for sensitive skin

CareFix post-surgical bras are designed for the weeks immediately following breast surgery or radiotherapy, when the skin is still tender and sensitive.

The seamless design and soft fabric used are ideal for the post-surgical stage, offering support and full freedom of movement without restricting or irritating sensitive tissue. The flexible material allows easy inspection of the surgical site and dressing changes. All materials used are Oeko-Tex certified in order to assure the patient and caregiver that there are no harmful substances in the selected materials.

Post-Surgical Bras

... and for every stage

SURGERY

RECOVERY PERIOD

Week 0

Week 4

Week 24 +

Post-Op Bra

Cotton
Microfiber


Comfort Bra

Light
Cotton
Microfiber

CareBra

Mastectomy bra





“ Comfort is essential
during recovery from
my breast surgery. ”

Jolie Simons, age 44

Post-Op Bras

The CareFix Post-Op Bras are designed for the weeks immediately following breast surgery with front closure for convenient application after surgery while facilitating inspection of the surgical site. Two Post-Op Bra models are available.



Post-Surgical Bras

SURGERY

RECOVERY PERIOD

Week 0

Week 4

Week 24 +

Post-Op Bra

Cotton

Microfiber

Comfort Bra

CareBra



Post-Surgical Bras

Post-Op Bra - cotton

Special features:

- Seamless for sensitive skin
- Convenient front closure with hook & loop facilitates application and inspection of surgical site
- Holds dressings in place
- Wireless support
- Light compression

General features:

- Washable in washing bag
- Latex-free material to prevent skin irritation of the patient and caregiver
- Oeko-Tex certified

Stage:

- Recommended for the post-operative stage immediately following surgery

SIZE RANGE	S		M		L		XL		XXL	
CareFix™ Post-Op Bra - cotton	CM	INCHES	CM	INCHES	CM	INCHES	CM	INCHES	CM	INCHES
	75 - 80	29½ - 31½	80 - 86	31½ - 34	86 - 92	34 - 36	92 - 96	36 - 38	96 - 106	38 - 42

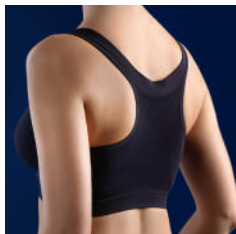
Recommended under bust measurements

Colours:



Art.no. 3211





Post-Surgical Bras

Post-Op Bra - microfiber

Special features:

- Seamless for sensitive skin
- Convenient front closure with two row hook & eye facilitates application and inspection of surgical site
- Wide shoulder straps for improved support
- Holds dressings in place
- Wireless support
- Light compression

General features:

- Washable in washing bag
- Latex-free material to prevent skin irritation of the patient and caregiver
- Oeko-Text certified

Stage:

- Recommended for the post-operative stage immediately following surgery

SIZE RANGE	S		M		L		XL		XXL	
CareFix™ Post-Op Bra - microfiber	CM	INCHES	CM	INCHES	CM	INCHES	CM	INCHES	CM	INCHES
	70 - 76	27½ - 30	76 - 84	30 - 33	84 - 92	33 - 36	92 - 102	36 - 40	102 - 115	40 - 45½

Recommended under bust measurements

Colours:

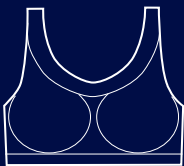


Art.no. 3212



Comfort Bras

The CareFix Comfort Bras are a line of seamless bras designed for the recovery period, when patients have gained more mobility and are able to apply a bra without a front opening. The bras are also ideal for leisure or anytime extra comfort is needed. Three models are available.



Post-Surgical Bras

SURGERY

RECOVERY PERIOD

Week 0

Week 4

Week 24 +

Post-Op Bra



Comfort Bra



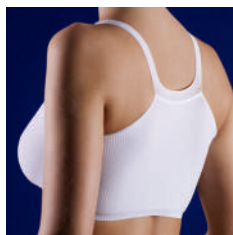
Light

Cotton

Microfiber

CareBra





Post-Surgical Bras

Comfort Bra - light

Special features:

- Comfortable yet inexpensive
- The lightweight and elastic material facilitates inspection of the surgical site
- No buttons or hooks
- Wireless support
- Full freedom of movement
- Soft and stretchy material that is easy to pull on
- Flexible fabric that is comfortable to wear and non-irritating to the skin

General features:

- Washable
- Latex-free material to prevent skin irritation of the patient and caregiver
- Oeko-Text certified

Stage:

- Recommended for the recovery period

SIZE RANGE	S		M		L		XL		XXL	
CareFix™ Comfort Bra - light	CM	INCHES	CM	INCHES	CM	INCHES	CM	INCHES	CM	INCHES
	60 - 75	23½ - 29½	70 - 80	27½ - 31½	80 - 90	31½ - 35½	90 - 100	35½ - 39	95 - 110	37½ - 43

Recommended under bust measurements

Colours:



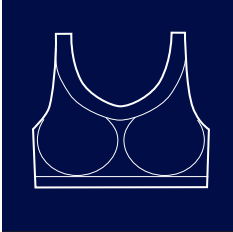
Art.no. 5006/5007



White:
60°C/140°F



Coloured:
40°C/105°F



Post-Surgical Bras

Comfort Bra - cotton

Special features:

- Seamless for sensitive skin
- No buttons or hooks
- Wireless support
- Full freedom of movement
- Flexible fabric that is comfortable to wear and non-irritating to the skin
- Soft and stretchy material that is easy to pull on

General features:

- Washable
- Latex-free material to prevent skin irritation of the patient and caregiver
- Oeko-Tex certified

Stage:

- Recommended for the recovery period

SIZE RANGE	S		M		L		XL	
CareFix™ Comfort Bra - Cotton	CM	INCHES	CM	INCHES	CM	INCHES	CM	INCHES
	75 - 80	29½ - 31½	80 - 85	31½ - 33½	85 - 95	33½ - 37½	95 - 105	37½ - 41½

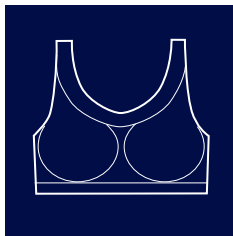
Recommended under bust measurements

Colours:



Art.no. 3061





Post-Surgical Bras

Comfort Bra - microfiber

Special features:

- Seamless for sensitive skin
- No buttons or hooks
- Wireless support
- Full freedom of movement
- Soft and stretchy material that is easy to pull on
- Flexible fabric that is breathable, comfortable to wear and non-irritating to the skin
- Microfiber quality - soft to the skin

General features:

- Washable
- Latex-free material to prevent skin irritation of the patient and caregiver
- Oeko-Tex certified

Stage:

- Recommended for the recovery period

SIZE RANGE	S		M		L		XL		XXL	
CareFix™ Comfort Bra - Microfiber	CM	INCHES	CM	INCHES	CM	INCHES	CM	INCHES	CM	INCHES
	65 - 75	25½ - 29½	75 - 85	29½ - 33½	85 - 95	33½ - 37½	95 - 105	37½ - 41½	105 - 115	41½ - 45½

Recommended under bust measurements

Colours:



Art.no. 3086



CareBra

CareBra is designed for the period immediately following mastectomy surgery. The bra has bilateral pockets designed to support a lightweight breast prosthesis, while offering comfort to sensitive skin. The bra is also ideal for leisure or anytime extra comfort is needed



Post-Surgical Bras

SURGERY

RECOVERY PERIOD

Week 0

Week 4

Week 24 +

Post-Op Bra



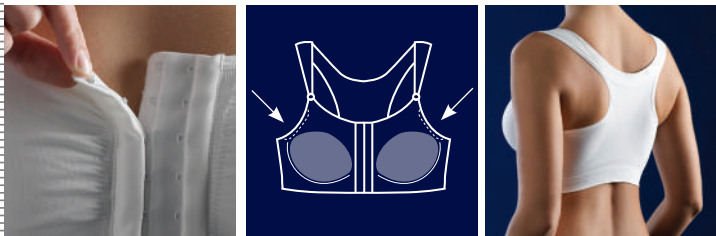
Comfort Bra



CareBra

Mastectomy bra





Post-Surgical Bras

CareBra - Mastectomy bra

Special features:

- Seamless for sensitive skin
- Bilateral pockets to hold a lightweight breast prosthesis immediately following mastectomy
- Wireless support
- Light compression
- Convenient front closure with two row hook & eye facilitates application and inspection of surgical site
- Wide shoulder straps for improved support and comfort
- The soft microfiber fabric provides superior breathability
- Easy placement of breast prosthesis

General features:

- Washable in washing bag
- Latex-free material to prevent skin irritation of the patient and caregiver
- Oeko-Text certified

Stage:

- Recommended for the post-operative stage immediately following mastectomy

SIZE RANGE	S		M		L		XL		XXL	
CareFix™ CareBra	CM	INCHES	CM	INCHES	CM	INCHES	CM	INCHES	CM	INCHES
	70 - 76	27½ - 30	76 - 84	30 - 33	84 - 92	33 - 36	92 - 102	36 - 40	102 - 115	40 - 45½

Recommended under bust measurements

Colours:



Art.no. 3228





carefix™

Post-Surgical Bras Packaging

TYTEX A/S
Denmark
Tel: +45 96604200
Fax: +45 96604201
info@tytex.dk

TYTEX GmbH
Germany
Tel: +49 2262 7629 0
Fax: +49 2262 7629 29
info@tytex.de

TYTEX, Inc.
USA
Tel: +1 401 762 4100
Fax: +1 401 762 4262
info@tytex.com

TYTEX UK
United Kingdom
Tel: +44 2392 362636
Fax: +44 2392 360511
williams@tytex.uk.com

TYTEX JAPAN
Japan
Tel: +81 3-3780-3716/8719
Tel: +81 3-3780-8713
nmo@tytex.jp

www.tytex.com · www.carefix.eu



TYTEXGROUP
Making healthcare more human

Copyright(©) 2008 by TYTEX GROUP. Information, specifications and product details contained in this document are accurate when printed, but can be changed without notice. We assume no responsibility for errors, omissions or damages resulting from the use of the information contained herein.

