

### BIRETIX DUO



BEFORE TREATMENT

Manfredini M et al. hi. tech dermo, 2013



AFTER 7 WEEKS' USE

### BIRETIX GEL



BEFORE TREATMENT

Fabbrocini G et al, Eur J Acne, 2012



AFTER 8 WEEKS' TREATMENT

### BIRETIX GEL



BEFORE TREATMENT

Fabbrocini G et al, Eur J Acne, 2012



AFTER 8 WEEKS' USE

### BIRETIX GEL



BEFORE TREATMENT

Fabbrocini G et al, Eur J Acne, 2012



AFTER 8 WEEKS' USE

## RESOLVE

# BiRetix



Ask your practitioner about **BiRetix** or visit [aestheticare.co.uk](http://aestheticare.co.uk) for further information.

@aestheticareuk

[facebook.com/aestheticareuk](https://facebook.com/aestheticareuk)

## CLINIC DETAILS

**AESTHETICARE**<sup>®</sup>  
THE PROFESSIONAL CHOICE

Advanced evidence-based dermatological medical devices, pharmaceuticals & medigrade cosmetics

0800 0195 322 @info@aestheticare.co.uk

[www.aestheticare.co.uk](http://www.aestheticare.co.uk)

Unit 740, Street 2, Thorp Arch Estate, Wetherby, West Yorkshire LS23 7FX

A division of Ferndale Pharmaceutical Ltd

## RESOLVE

# BiRetix



**CLINICALLY  
PROVEN TO VISIBLY  
IMPROVE SPOT  
PRONE SKIN**



## YOUR SKIN

When looked after, your skin is beautiful. Not only is it your primary barrier against external challenges, it's also what others use to form an opinion of your age and well-being.

It's no wonder, in that case, that skin prone to spots, blackheads and whiteheads often has a significant impact on confidence - particularly when it affects skin on the face and neck.

Spots can appear at any age in varying severities, and with a range of causes they can be difficult to get under control and manage on an ongoing basis.

## THE CAUSES OF SPOTS

Our skin is covered in hair follicles. In a healthy hair follicle the sebaceous gland produces a small amount of sebum, which moves up to the surface of the skin where it acts as a waterproofing agent. The opening of the follicle is wide making it easy for the sebum to exit the follicle (figure 1).

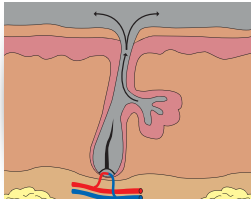


FIGURE 1

Blackheads and whiteheads are caused when the opening to the hair follicle is blocked, closing off oxygen and allowing the sebum to stagnate. This is also known as a comedone (figure 2).

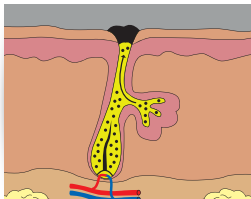


FIGURE 2

This environment allows rapid growth of P. acnes, the bacteria that leads to acne. At this point the hair follicle becomes inflamed and red (a spot) and can form a pustule (figure 3).

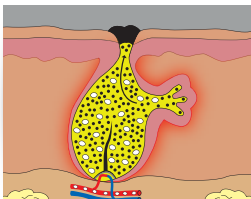


FIGURE 3

There are several factors than can cause the problem of spot prone skin:

- ▶ Hair follicles can become blocked by excessive sebum on the skin and an accumulation of dead skin cells
- ▶ Hormones can cause an increased production of sebum and an accumulation of dead skin cells at the follicle opening
- ▶ Some cosmetic products can block hair follicles

In order to effectively fight spots each stage of the spot development process needs to be tackled.

## HOW DOES BIRETIX WORK?

**BiRetix** is clinically proven to visibly enhance spot prone skin by tackling every stage of the cycle of spot prone skin. The key product in the range is **BiRetix Duo**, containing the optimum balance of leading technologies:

- ▶ A unique combination of vitamin A ingredients help to clear pores and clarify the skin, helping to reduce the appearance of comedones that can lead to spots
- ▶ A sophisticated botanical complex that's clinically proven to fight P.acnes; the bacteria that leads to spots
- ▶ Salicylic acid; clinically proven to purify skin and help to reduce redness



The **BiRetix** Spot-Control programme combines **BiRetix Duo** the **BiRetix Micropeel** and **BiRetix Mask** to create an effective, rounded regime:

**BiRetix Micropeel:** A clarifying and exfoliating cleanser containing a combination of willow bark extract and physical botanical exfoliants to help clear pores and stimulate cell renewal leaving the skin feeling soft, soothed and refreshed.



**BiRetix Mask:** A soothing clay mask rich in minerals, anti-oxidants and containing clinically proven vitamin A ingredients to further clarify skin, control sebum and reduce shine.

*Clinically proven to significantly reduce spots and blackheads in as little as 8 weeks*



SKIN SYNERGY<sup>®</sup>  
BY AESTHETICARE<sup>®</sup>

Get the best possible results from **BiRetix** by following the **BiRetix** Spot-Control Programme.

There are also SKIN SYNERGY<sup>®</sup> programmes for skin ageing prevention, rejuvenation and other problem skin conditions.

Book your SKIN SYNERGY<sup>®</sup> consultation today and find out which programme is the right one for you.